

State of Wyoming Corner Record

(In compliance with the **CORNER PERPETUATION AND FILING ACT**, Wyoming Statutes, 1977 Section 38-11-101, et. seq., and the Rules and Regulations of the Board of Professional Engineers and Professional Land Surveyors)

Reverse side of this form may be used if more space is needed.

Record of original survey and citation of source of historical information (if corner is lost or obliterated). Description of corner monumentation evidence found and/or monument and accessories established to perpetuate the location of this corner. Sketch of relative location of monument, accessories, and reference points with course and distance to adjacent corner(s) (if determined in this survey). Method and rationale for reestablishment of lost or obliterated corner.

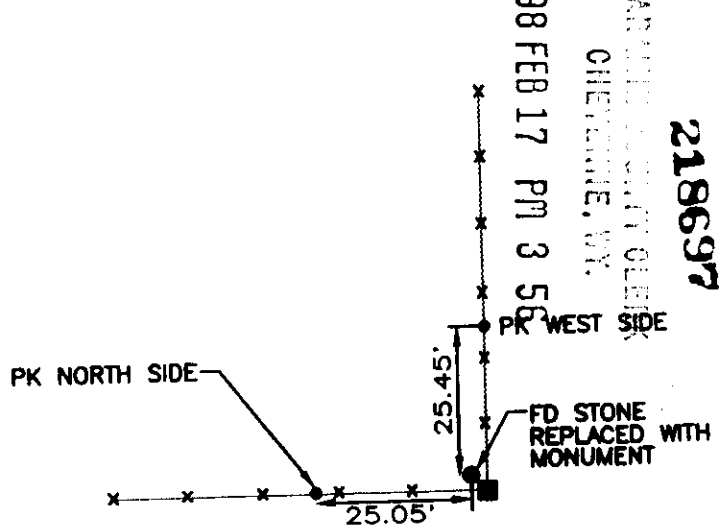
FOUND: PINK & WHITE GRANITE STONE
18" X 18" X 8", 5 CHISELS ON
SOUTH SIDE, 4 CHISELS ON EAST

GLO RECORD: SET GRANITE BOULDER 18" X 10" X 7"
FOR SECTION CORNER

SET: 3" ALUMINUM CAP ON 5/8" X 24"
REBAR STAMPED. SEE INSCRIPTION
SKETCH

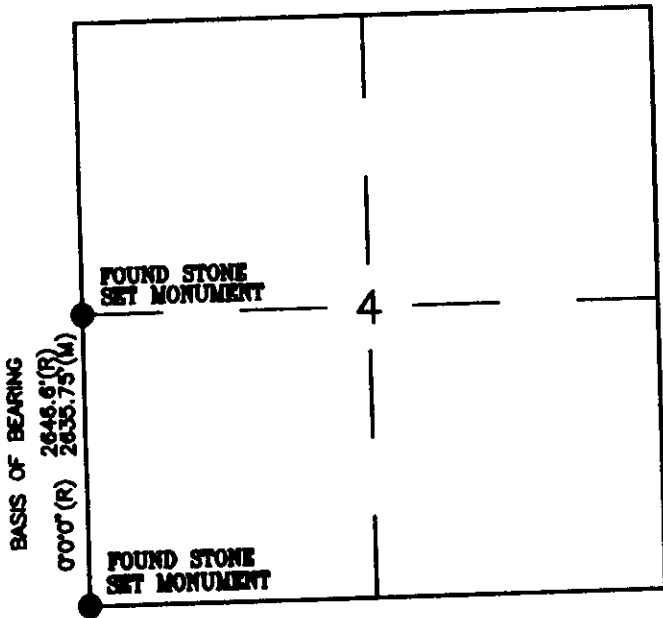
REFERENCES: 2 PK NAILS WITH WASHERS STAMPED
" I.M.P.S. 566 " IN FENCE POSTS
STONE BURIED ALONG SIDE FOR
MEMORIAL

Reference Locations



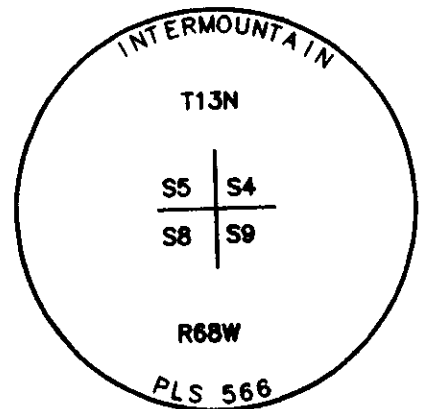
LARAMIE COUNTY CLERK
 CHEYENNE, WY.
 98 FEB 17 PM 3 55
 218697

Monument Location



NOTE: BURIED STONE NEXT TO MONUMENT AS MEMORIAL

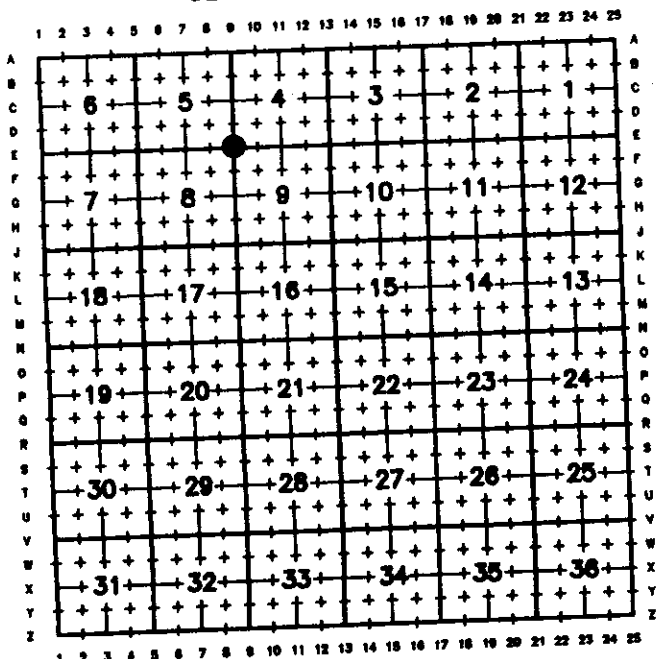
Monument Inscription



Date of Field Work: 11/5/97

Office Reference: 3054

Cross Index Plat

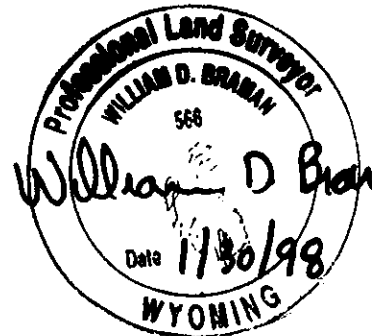


Firm/Agency, Address

INTERMOUNTAIN
PROFESSIONAL SERVICES
5801 OSAGE AVENUE
CHEYENNE, WYOMING 82009
Ph: (307) 632-3138
Fax: (307) 632-3194

This corner record was prepared by me or under my direction and supervision.

SEAL & SIGNATURE



Corner Name SECTION CORNER Section 4, T 13 N, R 88 W, 6th P.M.
County: LARAMIE Wyoming

Cross-Index No.: E-9

BOOK 1472

1570